

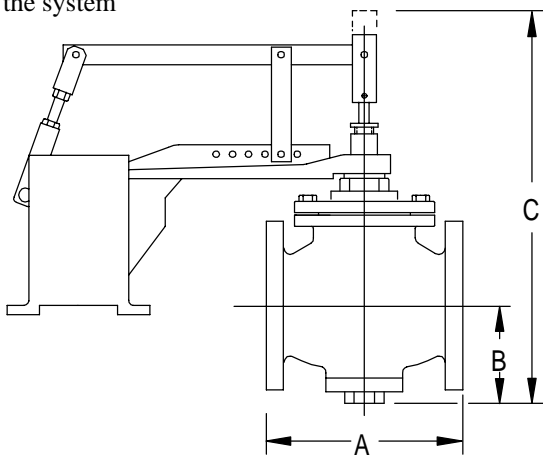
# HEAT-TIMER

## 2 - WAY MOTORIZED VALVES

For over 60 years, Heat-Timer has been offering motorized valves designed and constructed to withstand the temperature and pressure demands of all types of HVAC systems. **Each valve comes as a complete package, including the body, motor, linkage, and transformer.**

### VALVE

- Body manufactured in heavy duty cast iron
- Trim - Either Bronze, or 300 Series stainless steel (see chart below)
- Flanged mount connections
- Maximum pressure - 125psi
- Maximum temperature - 350°F
- Spring loaded teflon packing
- Double Seat, semi balanced
- Direct Acting - stem moves in to close
- Either Tapered or Contoured plug (see chart below) allows valve to modulate the amount of steam entering the system



### MOTOR ACTUATOR

- Reversing type with 3-wire (RWB) control
- Motor can be stopped at any position between fully open and fully closed
- Power - 24VAC, 50-60hz, 40VA max
- Motor cutoff switch not to exceed 120°F ambient temperature
- Gear train and power unit are oil immersed and contained in an aluminum alloy case
- Vertical mounting preferred, contact factory on other mounting alignments
- Output shaft of cyanide hardened steel
- Motor is available in 2 or 6 minute speed
- Specify A for auxiliary end switch option
- Torque
  - MD-2 (2 minute motor) - 110lbs
  - MD-6 (6 minute motor) - 120lbs

### LINKAGE

- Side bracket type offers minimum installation clearance
- Mounting bracket of cast aluminum construction
- Lever arm of cold drawn flat stock steel construction
- Rocker arm and strain relief assembly of machined aluminum construction
- Clevis is of bronze construction with brass clevis pins

Valve Size (Inches)	Catalog #	Flow Coefficient C <sub>v</sub>	Dimensions			Mount	Body	Trim	Motor Speed Minutes	Plug Type	Weight approximate	Maximum Operating Pressure lbs/sq inch
			A	B	C							
2 1/2	928252-50	70	7 3/4	4 1/8	15 1/8	Flanged	Iron	SS	2	Tapered	32	90
3	928253-00	100	9	4 3/8	15 11/16	"	"	"	2	"	40	90
4	928254-00	200	11 3/8	5	18 1/2	"	"	Bronze	2	"	75	70
5	928255-00	260	12	6 3/4	21 15/16	"	"	"	2	Contour	135	60
6	928256-00	350	14 1/8	7 1/2	23 1/16	"	"	"	6	"	175	40
8	926258-00	680	16 1/4	8 3/4	24 1/4	"	"	"	6	"	240	20
10	928260-00	960	20	9 5/8	26 1/4	"	"	"	6	"	390	10

Heat-Timer Corporation  
20 New Dutch Lane  
Fairfield, NJ 07004

Phone (973) 575-4004 Fax (973) 575-4052  
<http://www.heat-timer.com>