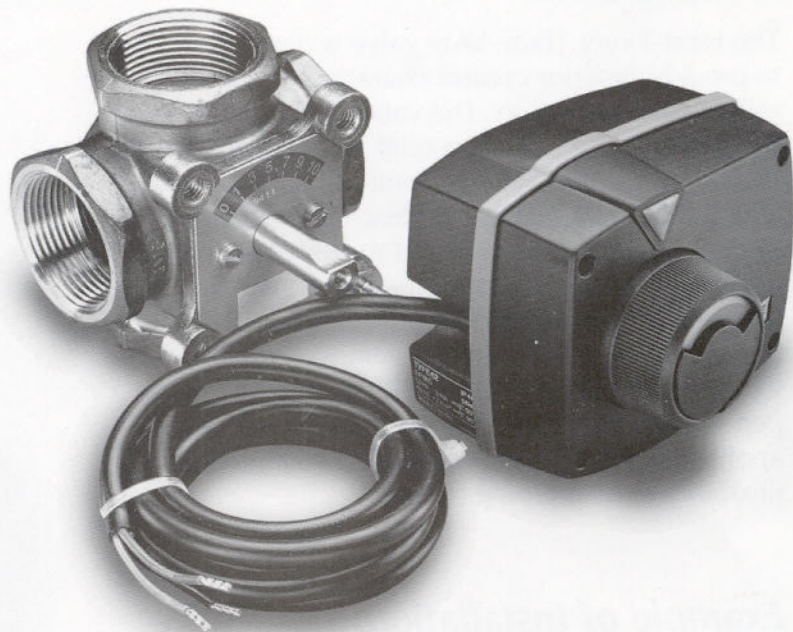


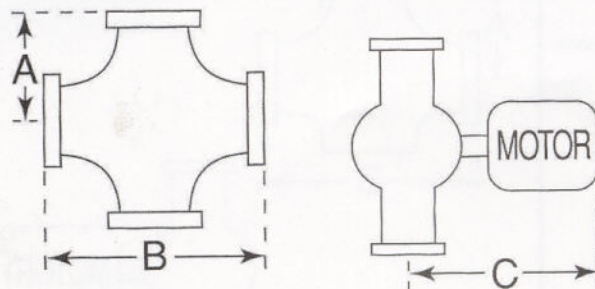
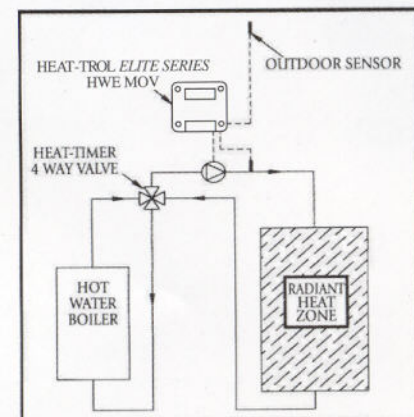
# RADIANT HEAT/FOUR-WAY MOTORIZED VALVE

## Description:

The Heat-Timer Four-Way valve can be used in heating and cooling applications, using water or non-corrosive liquids as a medium. The valve has a double mixing function which can use the hot water supplied by the boiler and add it to the return water. The result is a higher boiler return water temperature than can be achieved with a normal three-way mixing valve, reducing the risk of damage caused by thermal shock to the boiler. The valve has a rotary design which allows for greater flexibility in field piping layouts.



## Example of Installation:



## Four-Way Valve Includes: Valve Body & Motor Actuator

Size	Part No.	C.V.	Mount	Body	Motor Speed (Minutes)	A	B	C
1/2"	928400	2.9	Threaded	Brass	1.7	1.415"	2.83"	5.0"
3/4"	928401	7.3	"	"	"	1.415"	2.83"	5.0"
1"	928402	9.3	"	"	"	1.415"	2.83"	5.0"
1-1/4"	928403	21.0	"	"	"	1.725"	3.45"	5.2"
1-1/2"	928404	35.0	"	Iron	"	2.4"	4.8"	6.98"
2"	928405	50.0	"	"	4.0	3.1"	6.2"	7.58"
2-1/2"	928406	115	Flanged	"	"	4.0"	8.0"	8.08"
3"	928407	175	"	"	"	4.7"	9.4"	8.48"
4"	928408	265	"	"	"	5.2"	10.4"	8.88"

- All valves are complete with 24 volt motors
- All valves 1/2" to 1-1/2" are equipped with a 60 Series (Floating) Motor (1.7 Min)
- All 2" and larger valves are equipped with a 93 Series (Floating) Motor (4.0 Min)
- All other Heat-Timer Terms and Conditions are in Effect

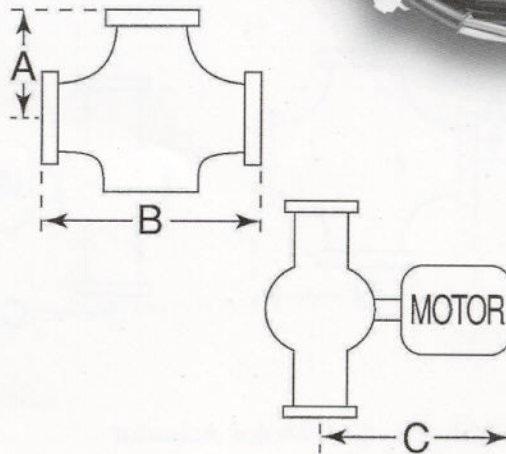
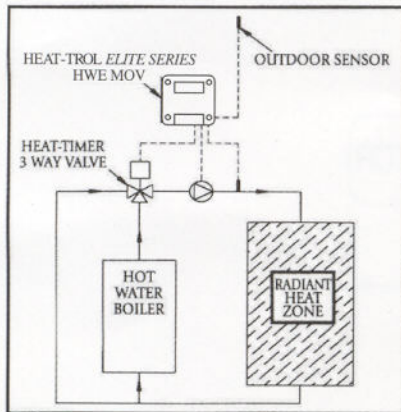
# RADIANT HEAT/THREE-WAY MOTORIZED VALVE

## Description:

The Heat-Timer Three-Way valve is designed to provide superior control characteristics and reliability in operation. The valve is primarily designed for use in commercial and residential hot water heating systems, controlling the temperature of a zone. The Heat-Timer *Elite Series* HWE-MOV will control the valve to provide an outdoor reset of the system water temperature. Or a Heat-Timer MCF-250 can be used to hold a constant system water temperature. The Heat-Timer Three-Way valve performs equally well in mixing and diverting applications. Its rotary design allows for greater flexibility in field piping layouts.



## Example of Installation:



## Three-Way Valve Includes: Valve Body & Motor Actuator

Size	Part No.	C.V.	Mount	Body	Motor Speed (Minutes)	A	B	C
1/2"	928500	2.9	Threaded	Brass	1.7	1.415"	2.83"	5.0"
3/4"	928501	7.3	"	"	"	1.415"	2.83"	5.0"
1"	928502	9.3	"	"	"	1.415"	2.83"	5.0"
1-1/4"	928503	21.0	"	"	"	1.725"	3.45"	5.2"
1-1/2"	928504	35.0	"	Iron	"	2.4"	4.8"	6.98"
2"	928505	50.0	"	"	4.0	3.1"	6.2"	7.58"

- All valves are complete with 24 volt motors
- All valves 1/2" to 1-1/2" are equipped with a 60 Series (Floating) Motor (1.7 Min)
- All 2" and larger valves are equipped with a 93 Series (Floating) Motor (4.0 Min)
- All other Heat-Timer Terms and Conditions are in Effect