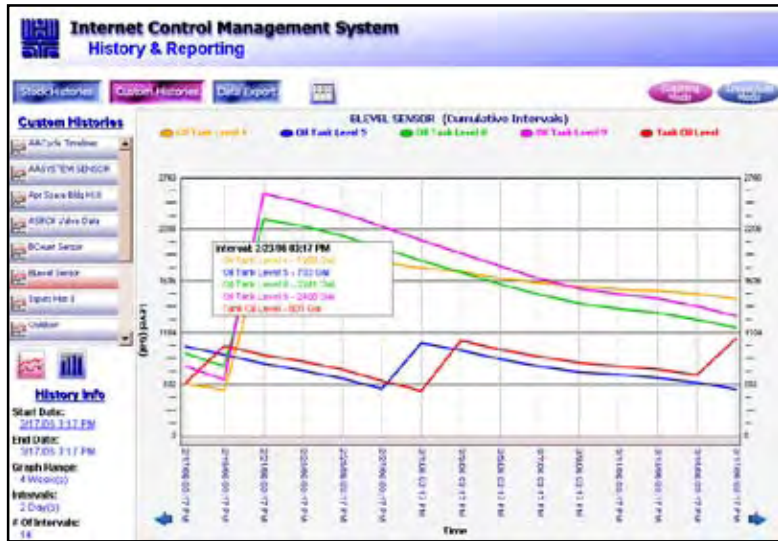
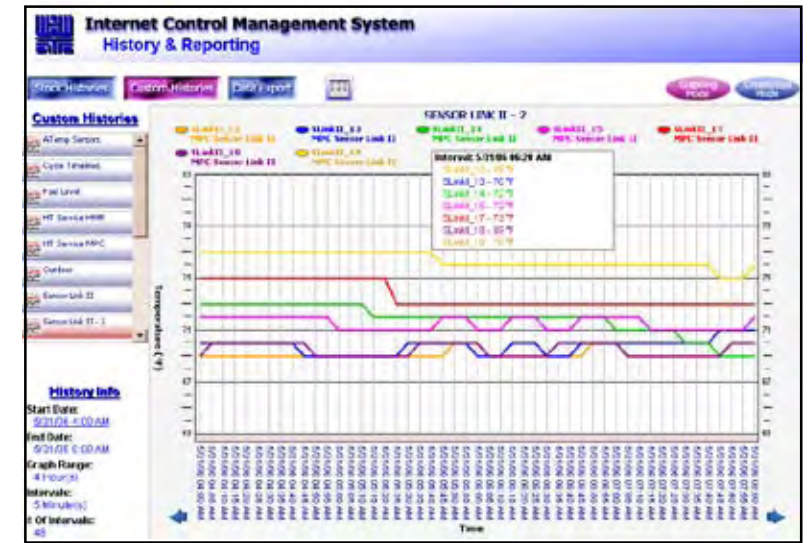


ICMS Provides Viewing, Modification, and Analysis Capabilities

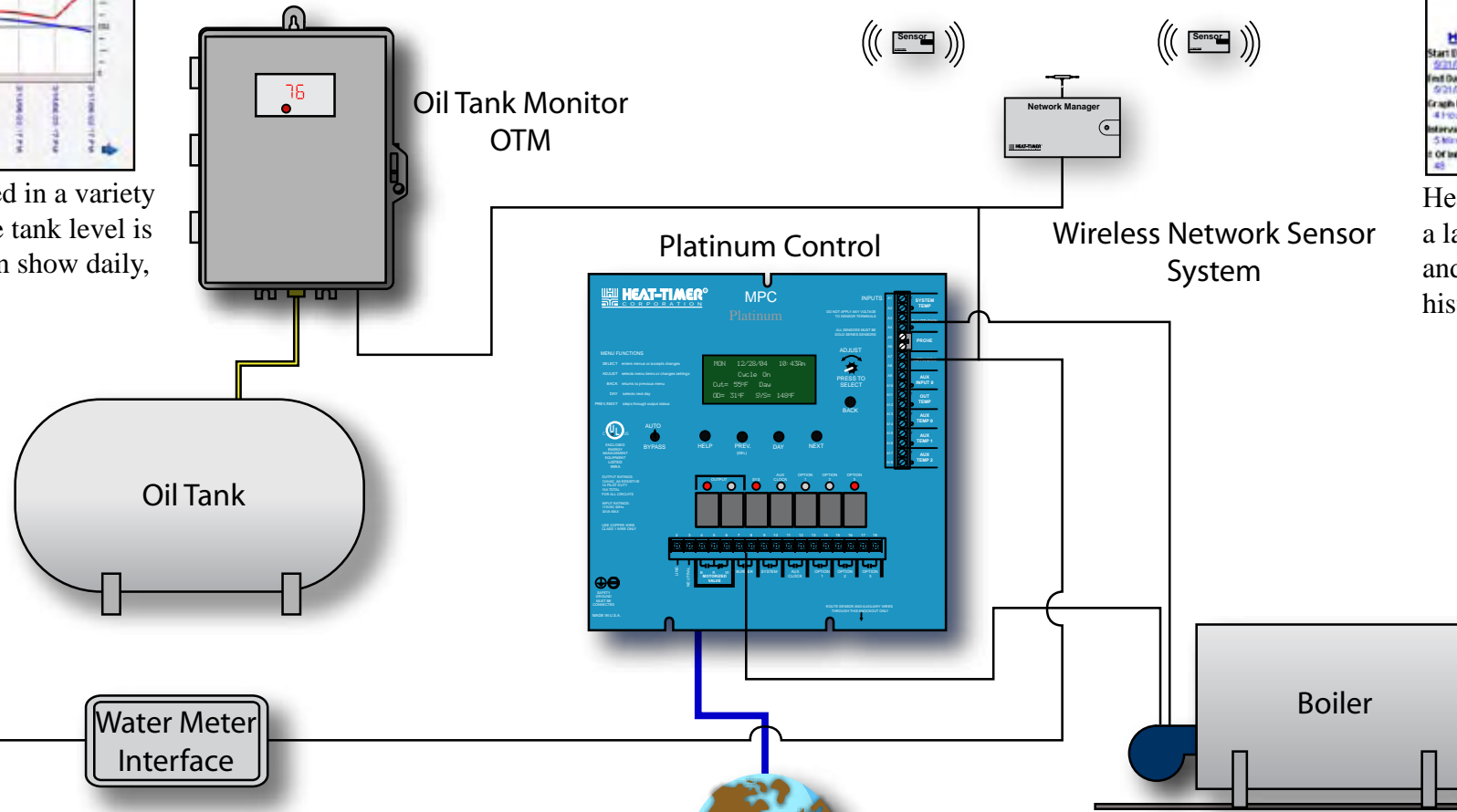
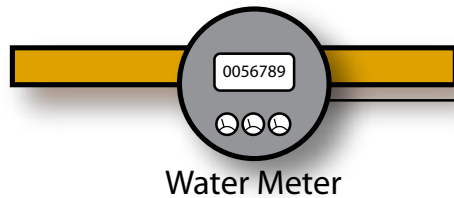


Oil Tank Information can be displayed and viewed in a variety of graphs. It can be viewed as a line graph where tank level is displayed at each time interval. In addition, it can show daily, weekly, or monthly consumption as a bar graph.



Heat-Timer's Wireless Network Sensor System, as well as a large variety of temperature, pressure, vacuum, humidity, and switch sensors, can now be charted into customizable histories and graphs.

Water Meter consumption history can be viewed as a daily, weekly, or monthly consumption bar graph.



The ICMS provides the user with many detailed timelines of system operation and status. The Cycle Timeline can show the user detailed saving periods and their origin. This provides the user with a clear understanding of current energy savings and potential saving opportunities.

